

The logo for Root 5 Farm features the words "ROOT" and "FARM" in a black, serif font, flanking a central red circle containing a white number "5". The entire logo is framed by decorative, horizontal, double-lined borders.

# ROOT 5 FARM

FAIRLEE, VERMONT

A photograph of a farm scene. In the foreground, there is a field with a green cover crop on the left and a dark, tilled field on the right. In the middle ground, there are several red barns and a long, white, covered walkway or tunnel. The background shows green trees and distant mountains under a cloudy sky.

## Equipment Innovations for Cover Cropping and Reduced Tillage

New England Veg & Fruit Conference 2022



# Outline of Presentation

- Overview of our farm and soils
- Types of cover crops we grow
- Equipment innovations for:
  - Cover crop seeding
  - Incorporation
  - Bed prep for vegetables





- 38 acre farm
- 8 acres of mixed vegetables
- 8 acres of cover crops
- Certified organic production





We pack 400 CSA shares each week from early May to the end of December









ROOT 5 FARM  
FAIRLEE GROWN ORGANIC





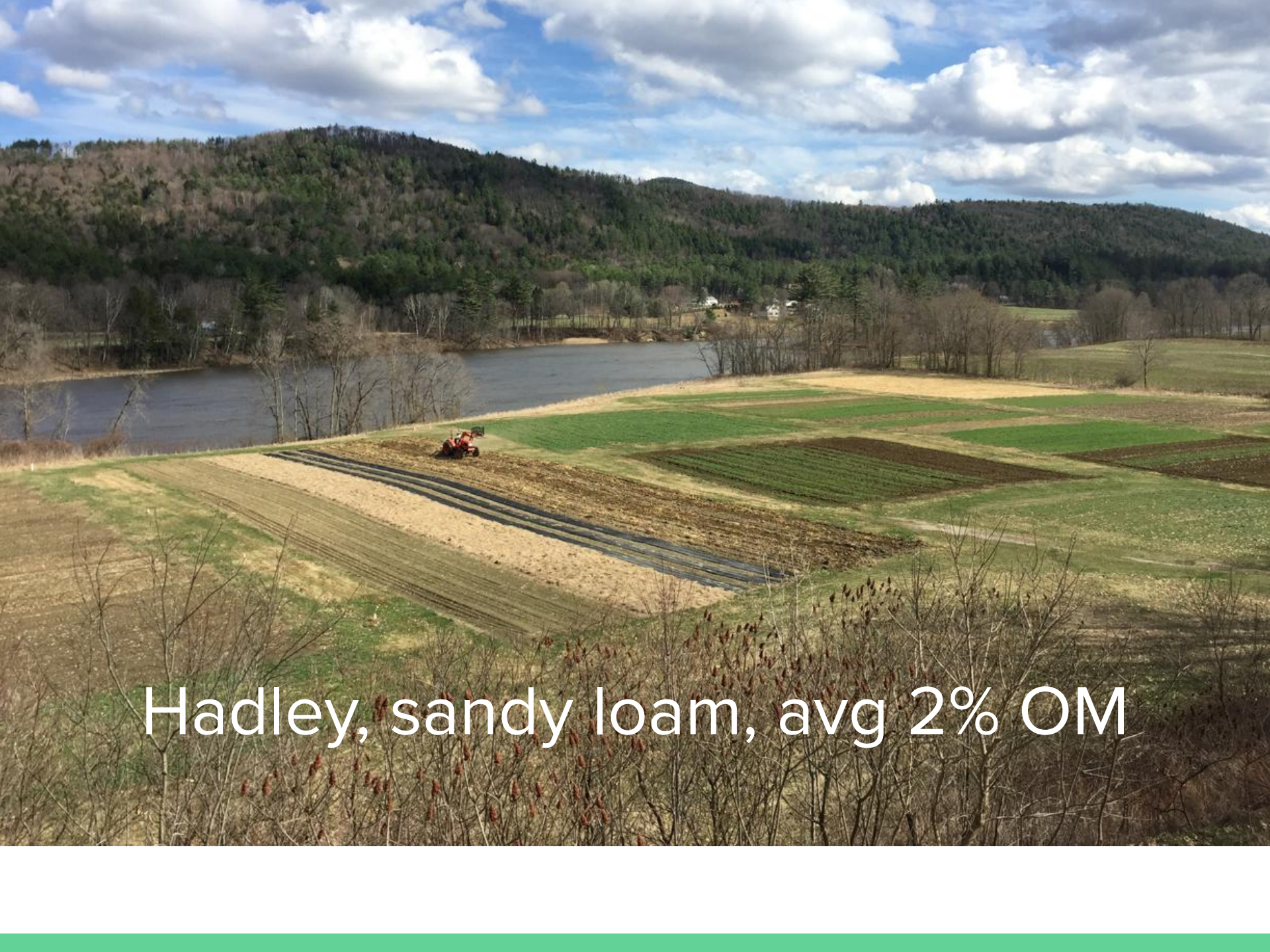


10 acres

28 acres

CT RIVER





Hadley, sandy loam, avg 2% OM





OATS & PEAS





Clover





T.A.R.A.

(timothy, alsike clover, red clover, and alfalfa)







RYE & VETCH







BUCKWHEAT





SORGHUM



## Seeding - former method

- Cone Spreader or flinger bag to broadcast seeds
- Brillion or shallow field cultivation to press it down and cover the seed



## Bed Prep- former method

- Mow
- Chisel Plow (rest)
- Disc (multiple times over the course of 4 weeks)
- Field cultivator for bed forming



# Goals to improve this system

- Improve germination, fewer weeds!
- Reduce the number of passes to establish and incorporate cover crops
- Reduce the friction between cover cropping and vegetable cropping
- Reduce the overall expense of cover cropping





GRAIN DRILL  
GREAT PLAINS 3P600









ROOT  
5  
FARM

LA1002 KUBOTA

FORIGO

FORIGO











